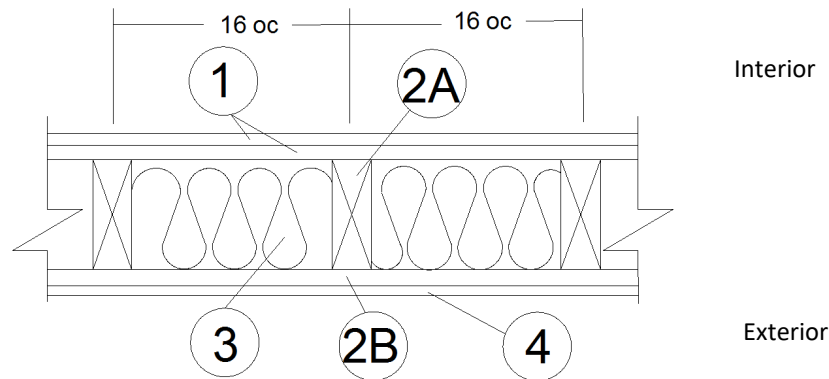


Fire Retardant Chemical Technologies LLC
Design No. FRCT/FRWT 120-01
Fire Retardant Wood
FlameTech™ Lumber and Plywood
ASTM E119, UL 263
Rating: 2 Hour Load Bearing (2015 NDS - F_c 0.96 for FRWT)
Rated From One Side (Interior Side Only)



1. GYPSUM BOARD (Interior): Two layers Type C Gypsum Board as listed below (1A through 1F) complying with ASTM C1396, min. 5/8 in. thick, 4 ft. wide applied vertically, fastened to framing. Face layer joints staggered with base layer and covered with paper tape and joint compound.

- A. American Gypsum Firebloc® Type C
- B. CertainTeed Saint-Gobain Type C
- C. Georgia-Pacific Gypsum Fireguard C®
- D. National Gypsum Gold Bond® Fire-Shield C™
- E. Panel Rey® Fire Rey Type C
- F. USG Sheetrock® Firecode® C

FASTENERS (Not Shown):

- A. FACE LAYER – Min. #6 × 2 in. long Type S or W screws spaced max. 8 in. on center (oc) and heads covered with joint compound.
- B. BASE LAYER – Min. #6 × 1-5/8 in. long Type S or W screws, spaced max. 6 in. oc.

2. CERTIFIED MANUFACTURER: Fire Retardant Chemical Technologies LLC.

CERTIFIED PRODUCT: FlameTech™

2A. CERTIFIED MODEL: FlameTech Lumber

FlameTech Lumber is min. 2×4 in. nominal wood studs spaced 16 in. oc, or 2×6 in. nominal wood studs spaced 24 in. oc, double top plates and single bottom plate fastened together with 16d common nails (3-1/2 in. × 0.162 in.), 16d box nails (3-1/2 in. × 0.135 in.), or 12d ring nails (3-1/4 in. × 0.135 in.).

2B. CERTIFIED MODEL (Exterior): FlameTech Plywood

FlameTech Plywood, min. 15/32 in. thick, applied vertically over the specified framing with min. 2-3/8 in. long, 0.113 in. diameter nails, spaced max. 8 in. oc around the perimeter and max. 12 in. oc in the field. Horizontal joints must be blocked.

3. INSULATION: Fiberglass Class A batt insulation min. 3-1/2 in. thick R-13 friction fit between the studs. If 2×6 in. nominal wood studs are used, fiberglass batt insulation shall be min. 5-1/2 in. thick.

4. EXTERIOR FACINGS (Optional): Materials installed in accordance with manufacturer’s installation instructions:



Division 06 – Wood, Plastics, and Composites
06 05 73 Wood Treatment
06 05 73.13 Fire-Retardant Wood Treatment

- Masonry brick veneer or concrete
- Portland cement or synthetic stucco systems with self-furring metal lath or adhesive base coat
- Hardboard, wood structural panel, plywood, or fiber-cement siding
- Metal siding
- Vinyl siding – exterior plastic

Consult the listing report on the Directory of Building Products (<https://bpdirectory.intertek.com>) for the edition of the standard(s) evaluated